

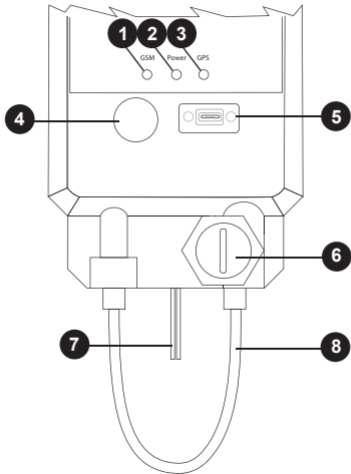
**Skycube**

# T63 Container Tracker



**Quick Start Guide**

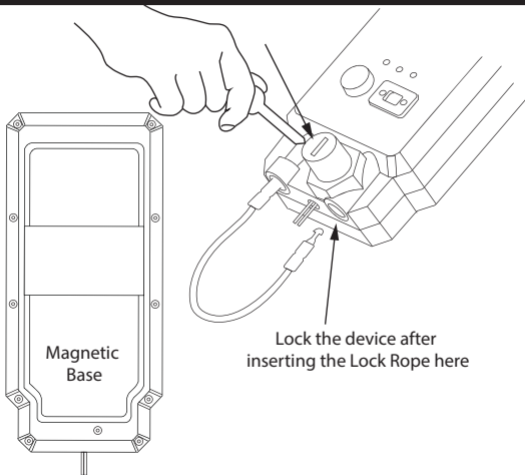
## Different parts of T63 Container Tracker



## Description

- 1 LED indicator for GSM signal
- 2 LED indicator for Power
- 3 LED indicator for GPS signal
- 4 Power On button
- 5 USB port for battery charging
- 6 Lock
- 7 Wire for charging from vehicle battery
- 8 Lock Rope for locking the device with containers

## Locking arrangements



## LED indication and meaning

**GPS LED** - It will blink only when GPS signal is available. Otherwise, it will remain off.

**GSM LED** - This led will blink always as long as the device is ON.

### **Blinking Rate for GSM LED:**

Fast blinking means not synchronized with network - blinking rate is 800 milliseconds

Slow Blinking means synchronized with network - blinking rate is 2 seconds.

### **Power LED –**

Power LED (RED) will glow for 3 seconds when the device is powered ON.

Power LED (GREEN) will glow continuously during charging.

Power LED (BLUE) will glow continuously if the device is fully charged.

**Note:** Inside the device there is a switch which gets pressed when the device is in Lock position. This switch gets released if anyone tries to tamper or unlock the device and an SMS is sent to some pre-set numbers.

**Customer Care: +91 33 4601 7640**

**Skycube Networks Pvt. Ltd.**

Om Chambers, No. 648, Unit No. A8, 3rd Floor Binnamangala,  
1st Stage, Hoysala Garden,  
100 Feet Road Cross, Indira Nagar, Bengaluru - 560038,  
Karnataka,  
Phone: +91 80 4851 8391, [www.skycube.in](http://www.skycube.in)